

EMPLOYER ENGAGEMENT SERVICES

2024 - 2025



Make an impact

**OUR SERVICES
& EVENTS**

- P 8/10 -



**OUR STUDENTS : YOUR
FUTURE TALENT**

- P 5/7 -



**EDHEC INTERNATIONAL
BUSINESS CLUB**

- P 11 -



**OUR SCHOOL &
PROGRAMMES**

- P 3/4 -



THE TEAM

- P 12/13 -



**TABLE OF
CONTENTS**

KEY FIGURES



5
campus



8,600
students including 35% of
international students



+120
partners companies



23
programmes



110
nationalities



+50,000
Alumni worldwide



39
double degrees

RANKINGS

1ST

CAREER CENTRE &
ALUMNI NETWORK IN FRANCE
FINANCIAL TIMES 2023

2ND

BBA IN FRANCE
CHALLENGES 2024

3RD

GRANDE ÉCOLE IN FRANCE
CHALLENGES 2023

7TH

BEST BUSINESS SCHOOL IN EUROPE
FINANCIAL TIMES 2023

9TH

MASTER IN FINANCE WORLDWIDE
FINANCIAL TIMES 2023

11TH

MASTER IN MANAGEMENT
WORLDWIDE
FINANCIAL TIMES 2023

Challenges^s

FT FINANCIAL
TIMES

BACHELOR IN BUSINESS ADMINISTRATION (BBA)

- Business Management BBA Track
- Global Business BBA Track
- Online BBA Track

MASTER IN MANAGEMENT & MSc

FINANCE

- International Finance
- Accounting & Finance
- Corporate Finance & Banking
- Financial Engineering
- Climate Change & Sustainable Finance

BUSINESS MANAGEMENT

- Creative Business & Social Innovation
- Data Analytics & Artificial Intelligence
- Entrepreneurship & Innovation
- Global & Sustainable Business
- LLM in Law & Tax Management
- Management & Leadership
- Marketing Analytics
- Marketing Management
- Strategy, Organisation & Consulting

GLOBAL ECONOMIC TRANSFORMATION & TECHNOLOGY (GETT)

USA/Asia Pathway: Innovation & Entrepreneurship

MASTER 1:

- S1 : Lille, France
- S2 : Séoul, South Korea (SKK Business School)

MASTER 2:

- S5-S6 : San Francisco Bay Area, USA (Berkeley Haas)

Europe Pathway: Tech & Data

MASTER 1:

- S1 : Paris, France
- S2 : Berlin, Germany (ESMT Berlin)

MASTER 2:

- S5-S6 : London, UK (Imperial College Business School)

DATA SCIENCE & AI FOR BUSINESS

MASTER 1:

- IT, coding, database management, statistic model development, machine learning

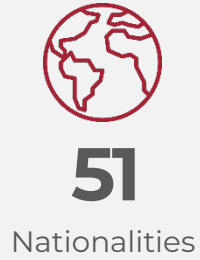
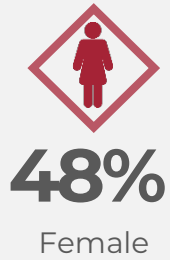
MASTER 2:

- Option for MSc Financial Engineering, MSc Data Analytics & Artificial Intelligence, MSc in Marketing Analytics or Double Degree with EURECOM

MASTER OF BUSINESS ADMINISTRATION (MBA)

- Global MBA
- Executive MBA

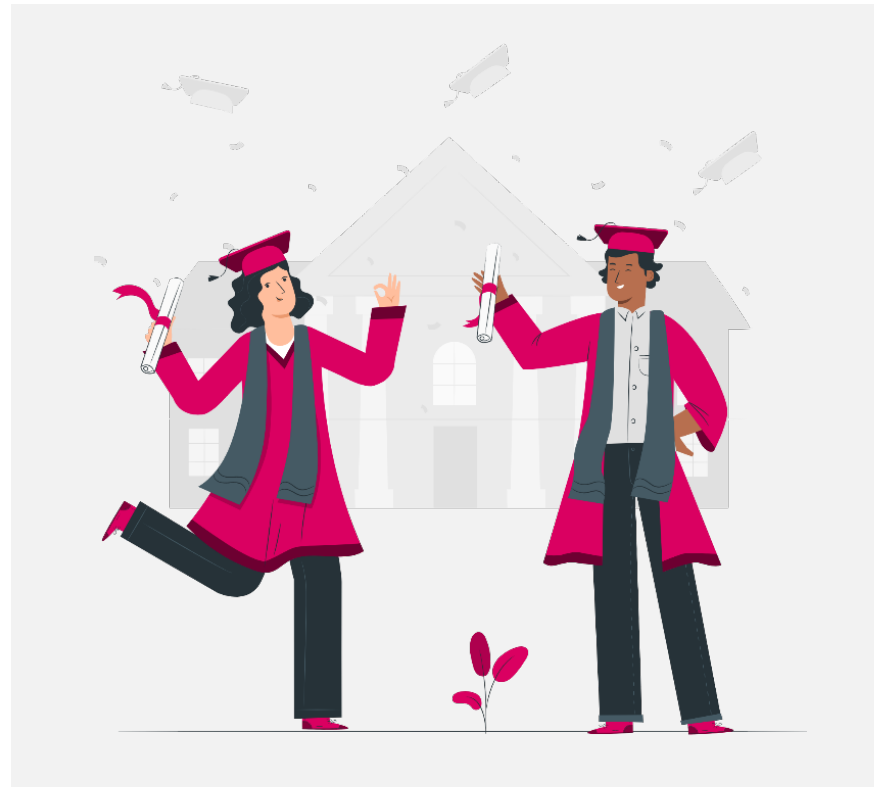
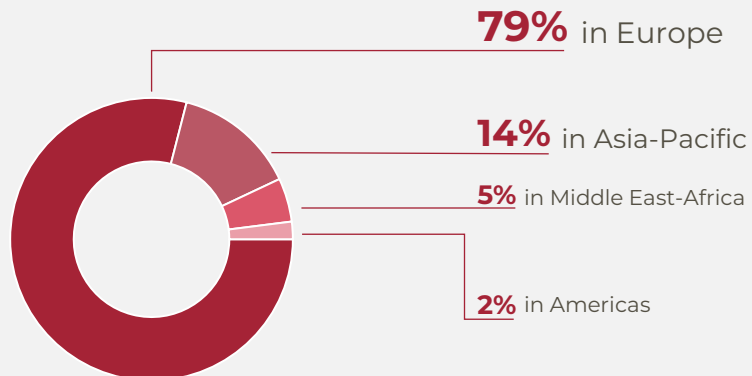
STUDENTS PROFILES



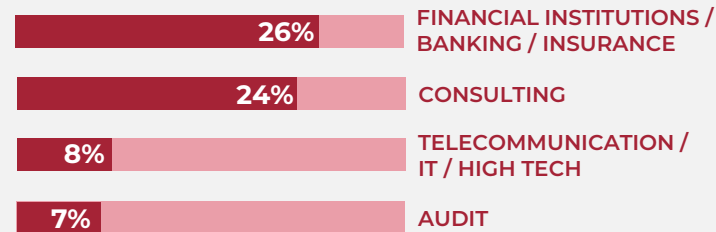
LOCATION

76%
of international graduates work outside their home country

18%
of French graduates work abroad



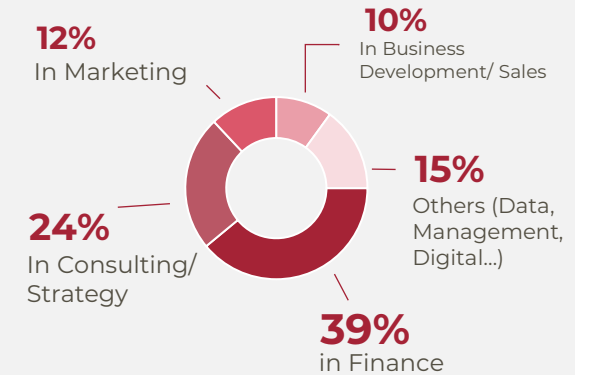
SECTOR



GREENER GENERATION



FUNCTION

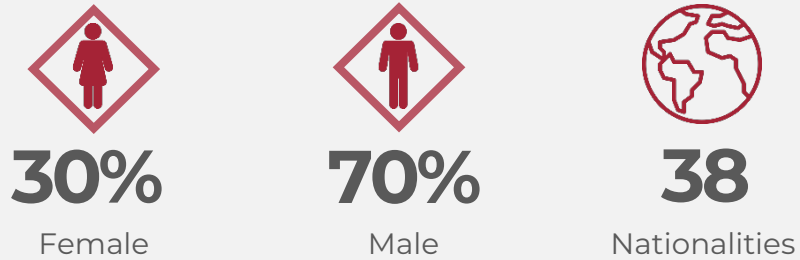


KEY FIGURES

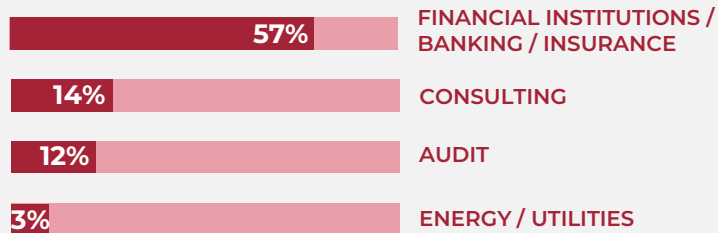


77% Landed a job during or less than 2 month after leaving school

STUDENTS PROFILES



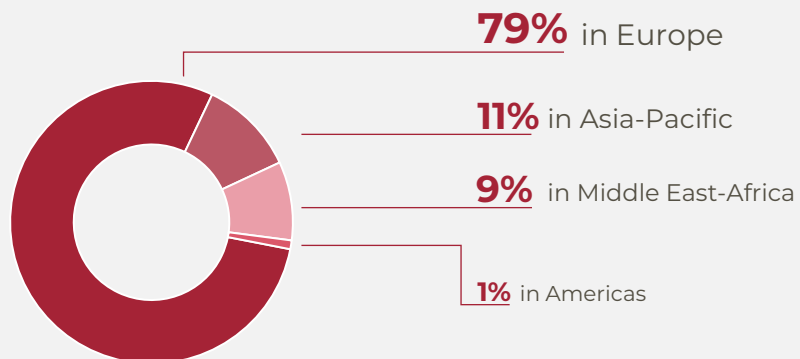
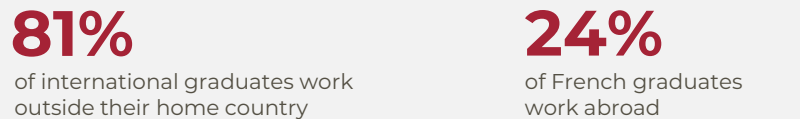
SECTOR



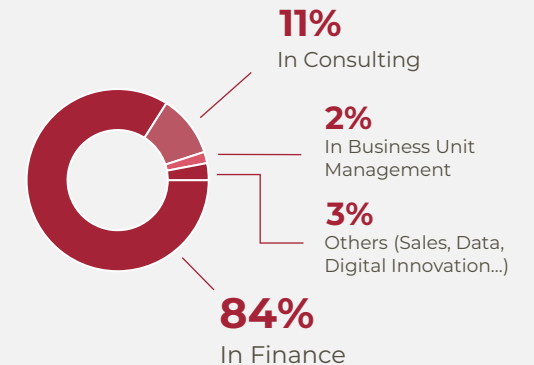
GREENER GENERATION



LOCATION



FUNCTION



KEY FIGURES



STUDENTS PROFILES



52%
Female



48%
Male



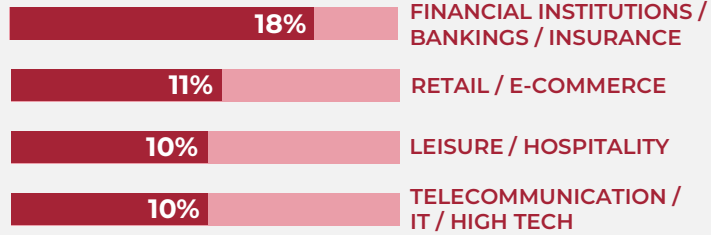
53
Nationalities

64%
CONTINUED
STUDIES

36%
ENTERED THE
JOB MARKET



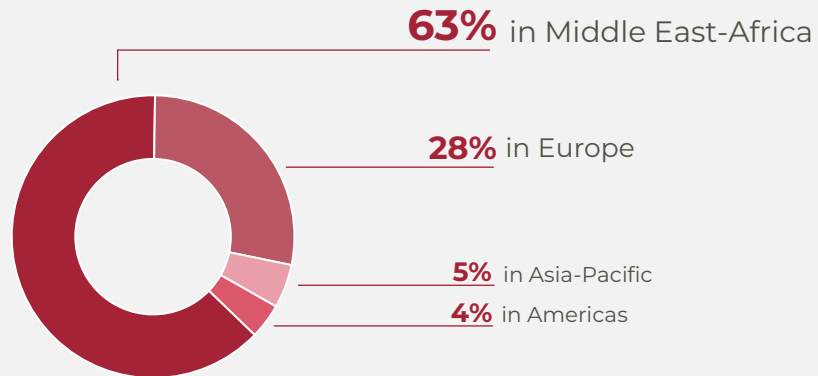
SECTOR



LOCATION

33%
of French graduates work
abroad

49%
of graduates work outside
their home countries

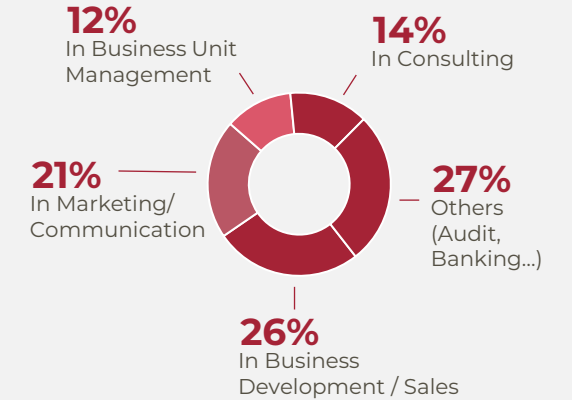


GREENER GENERATION

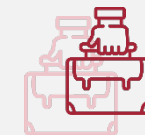


40% of jobs include
CSR missions

FUNCTION



KEY FIGURES

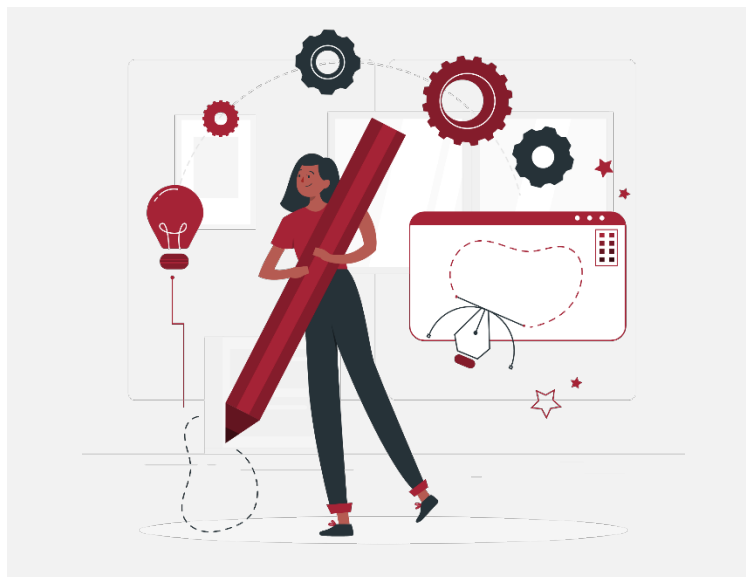


61% landed a job before
leaving school

14% created their own
companies

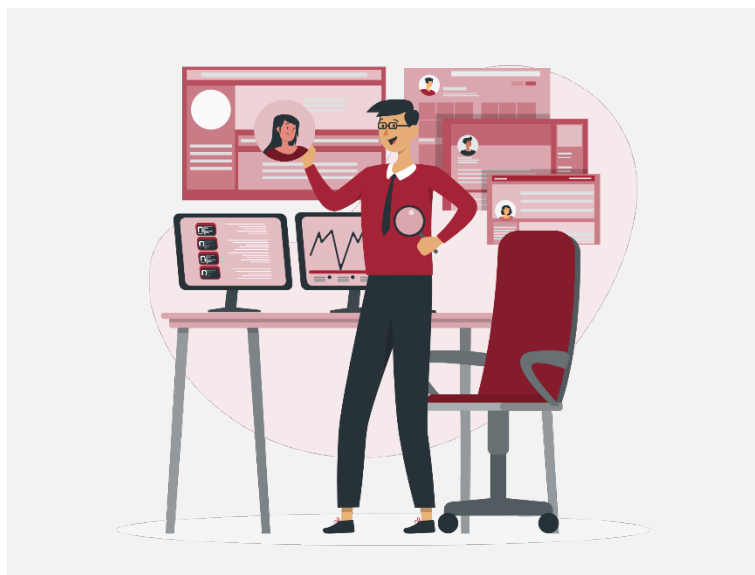
RECRUITMENT & BRANDING

- ◆ Internship & Job Offers
- ◆ Talent Sourcing & CV Books
- ◆ Events:
 - Finance Career Days; On-campus presentations, interviews; Recruitment sessions;
 - CSR and Diversity series...
- ◆ Events Abroad: Company Treks



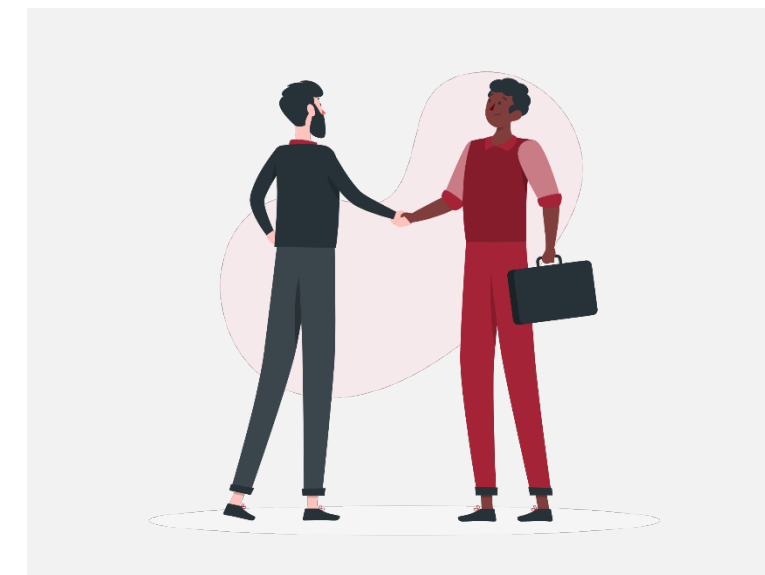
PARTNERSHIPS

- ◆ EDHEC International Business Club
- ◆ Corporate Programme Sponsors
- ◆ Learning Partnerships

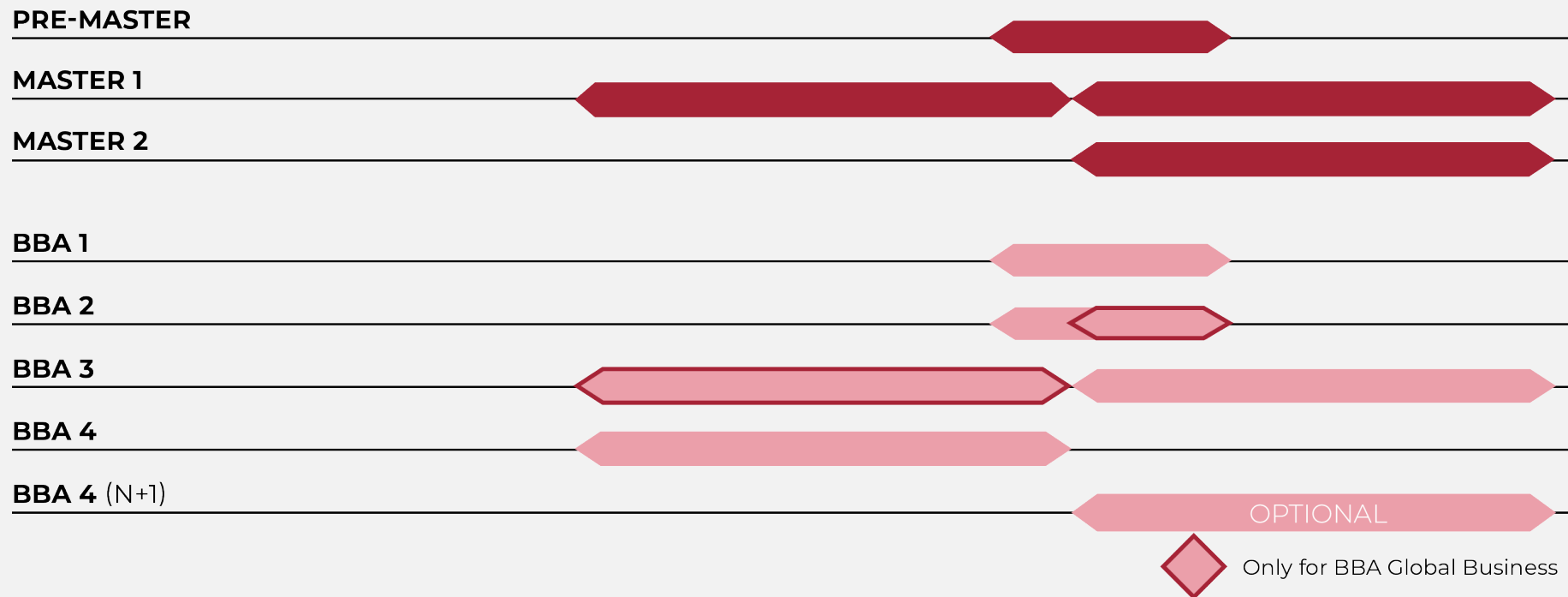


TALENT DEVELOPMENT

- ◆ Career Booster Programme : Assessment Centre, Events and Workshops
- ◆ Open Innovation
- ◆ Inclusion & Diversity Challenge



2024
2025
 SEP | OCT | NOV | DEC | JAN | FEB | MAR | APR | MAY | JUN | JUL | AUG | SEP | OCT | NOV | DEC



SUMMER INTERNSHIPS



2-3 months



BBA 1,2,3 & Master students

GAP YEAR INTERNSHIPS



Up to 12 months (2x6 months)



BBA 3,4 & Master 1 students

END OF STUDIES INTERNSHIPS



6 months – BBA 4 & Master 2 students

GRADUATE PROGRAMMES



BBA 4 & Master 2 students

FINANCE CAREER DAYS

A 2-day event that brings together recruiters and our best talent from Finance.

- ◆ Employer branding, recruitment & networking
- ◆ 800+ Finance Masters students
- ◆ 12th & 13th September 2024, Nice Campus

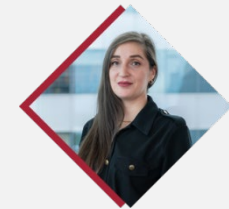
COMPANY TREKS 2024-2025

Host a group of selected students at your company to provide them an insight into your organisation and jobs.

- ◆ Employer branding, recruitment & networking
- ◆ Pre-selected Finance & Business Management Masters students
- ◆ October onwards, London, Paris & Dublin

CONTACT US

FOR FURTHER INFORMATION AND CUSTOMISED EVENTS, DON'T HESITATE TO CONTACT OUR EVENTS MANAGER:



MARIA-ALEJANDRA LARIOS
maria-alejandra.larios@edhec.edu

[DOWNLOAD OUR 2024-2025 EVENTS CALENDAR >](#)

STAND ALONE COMPANY PRESENTATION

- ◆ Employer branding, recruitment & networking
- ◆ BBA, Masters & MBA students from all tracks
- ◆ All year around, on campus or online

RECRUITERS BREAKFAST

An event aimed to bring together HR professionals and Talent Managers from our Top Recruiters to connect with their peers and share best practices.

- ◆ Sharing best practices & networking
- ◆ HR Professionals & Talent Managers, by invitation only
- ◆ June 2024, London Campus

CSR DIVERSITY SERIES

- ◆ Employer Branding
- ◆ BBA, Masters & MBA students from all tracks
- ◆ October 2024 onwards, Lille Campus & online

Finance Career Days



SEPT 2024

Industry Career Days



OCT 2024

CSR & Diversity Series



NOV 2024

EDHEC Forum



JAN 2025

Virtual Fair



MAR 2025

SEPT 2024



Virtual Fair

OCT 2024



Company Treks

OCT 2024



Graduate Programme Day

FEB 2025



Luxury Week

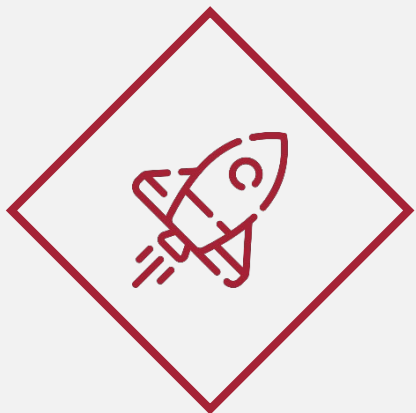
ENHANCE YOUR BRAND AWARENESS & VISIBILITY



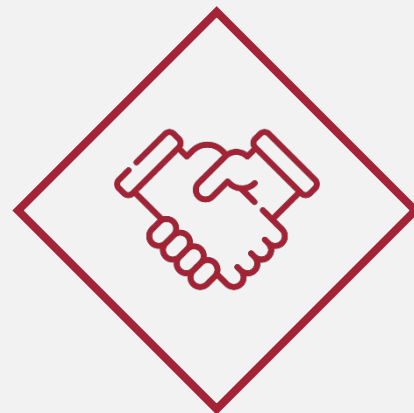
GAIN PRIVILEGED ACCESS TO EDHEC TALENT & EVENTS



BOOST YOUR IMAGE & RECRUITING EFFORTS



BENEFIT FROM A CLOSE RELATIONSHIP & CUSTOMISED SERVICE



	Smart	Premium	Sapphire
Your dedicated Key Account Manager	◆	◆	◆
Access to CV Database	◆	◆	◆
Online Events	1	1	2
On Campus Recruiting and Employer Branding Events	1	2 (Sponsorship)	2 (Sponsorship)
1 to 1 Events	◆	◆	◆
Meet your peers (Breakfast, Round Table)	◆	◆	◆
Promote your company and your logo on our portal	◆	◆	◆
Share opportunities / Events on our portal	◆	+ Direct emails to target students	+ Direct emails to target students
CV Books	1	5	5
CSR & Diversity Series		◆	◆
Recruitment Sessions		◆	◆
Masterclasses			◆

CONTACT US FOR MORE INFORMATION ON THE PACKAGES AND PRICES >



FERNANDA DIAZ

Director, Careers & Employer Engagement

INTERNATIONAL CORPORATE RELATIONS & COUNTRY MANAGERS

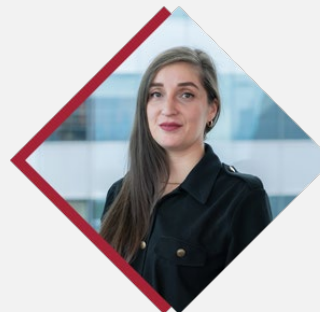


MARKETING & PARTNERSHIPS

FANNY EDELGA

fanny.edelga@edhec.edu

CENTRAL & EASTERN EUROPE, MONACO,
NETHERLANDS, NORDICS, SWITZERLAND,
UK, US-EAST COAST



EVENTS & PARTNERSHIPS

MARIA-ALEJANDRA LARIOS

maria-alejandra.larios@edhec.edu

AFRICA, BELGIUM, CANADA, GERMANY,
ITALY, LATIN AMERICA,
LUXEMBOURG, MIDDLE EAST, SPAIN, UK

CHINA



SISI PAN
sisi.pan@edhec.edu

INDIA



NILESH GAIKWAD
nilesh.gaikwad@edhec.edu

SINGAPORE



JOYCE CUFF
joyce.cuff@edhec.edu

UK & IRELAND



AUDREY HAVERKAMP
audrey.haverkamp@edhec.edu

US - WEST COAST



PATRICIA VINANT
patricia.vinant@edhec.edu

THANK YOU

Contact us for more information at:
CorporateConnections@edhec.edu

Make an impact

